



READING THIS LETTER CAREFULLY BEFORE STARTING THE REVISION

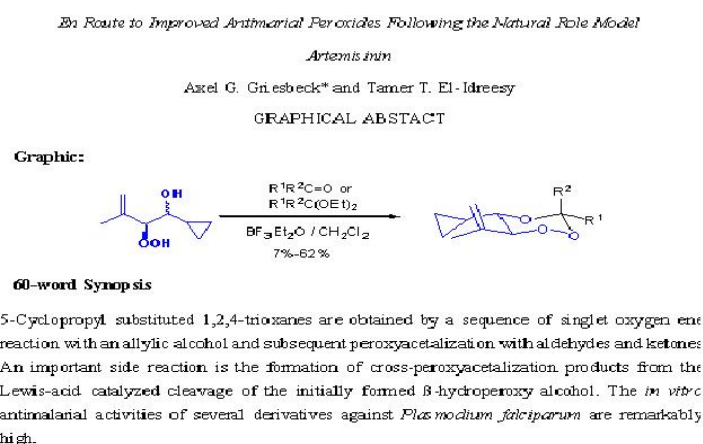
When a contributor receives an email of revision, whose contribution is *strongly* considered to be published in JCCS after revision. Go to the online submission webpage and login to read the comments. Before your preparation for the revision, spend a few minutes reading this letter, then revise the manuscript according to our request.

Be sure to strictly follow the guidelines and prepare all the requirements for further evaluation.

PART I: Requests for format and illustrations.

- (1) Prepare a **cover letter** explaining the changes according to the review's comments.
- (2) Prepare a **two-columned single file** in a word or a pdf file. **Format should contain all schemes, tables, figures, and graphical abstract intergrated in the revised manuscript.**
- (3) Prepare a **graphical abstract** for the table of content:

The authors are required to provide a 60-word synopsis along with an informative illustration at the end of the revised manuscript. **The graphic is best fit in size of 6 x 4 cm (width x height, format: *.tif, 300dpi at least).** Refer to the following example.



- (4) **We encourage the authors cite as many JCCS papers as possible.** All of our published paper can be found on our website, or you may wish to visit ISI Web of Science for the further information of our published papers

(5) Format for Illustrations (NOTE: If the quality of figures is too poor, you will be asked to revised again.)

1. Contrast and resolution are important

Original artwork or high-quality reproduction with at least 300 dpi is strongly preferred.

Photocopies do not reproduce well. Color reproduction of figures is unavailable.

Figures should be carefully lettered:

- Lettering should be no smaller than 12 pt for an illustration of 14cm²
- Lines should be no thinner than 0.5 pt (—)
- **All figures should be best in black, gray, or red in size of 8.4×21cm (width×height)**

2. Illustrations should be arranged to fit in a single or a double column.

	Single	Double
Width		
Minimum	—	12 cm
Maximum	8 cm	17 cm

If you must submit artwork that must be reduced, use larger lettering and thicker lines so that, they are clear and intelligible for publication.

3. Chemical Structures

Authors using drawing package, e.g. ChemDraw should use the following procedures:

(1) As *drawing settings* select:

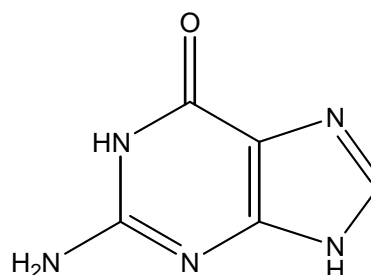
chain angle	12
bond spacing	18% of width
fixed length	14.4 pt (0.508 cm, 0.2 in.)
bold width	2.0 pt (0.071 cm, 0.0278 in.)
line width	0.6 pt (0.021 cm, 0.0083 in.)
margin width	1.6 pt (0.056 cm, 0.0222 in.)
hash spacing	2.5 pt (0.088 cm, 0.0345 in.)

(2) As *text settings* select:

Font	Helvetica / Times New Roman
Size	10 pt

(4) Set the page setup to 100%.

For example



(3) Under the *preferences* choose:

Units	Points (pt)
Tolerances	3 pixels

(6) Revisions for References:

All the reference should be indicated consecutively in the text by superscript numerals, to the right of all punctuation. Abbreviations of journal titles should conform to the practice of Chemical Abstracts. Please refer to the following examples:

Journal:

Chen, M.-Y.; Fang, J.-M. *J. Chin Chem. Soc.* **1989**, *36*, 469.

Book without editors:

Bernstein, R. B. *Chemical Dynamics via Molecular Beam and Laser*; Oxford: New York, 1982; Chapter 9.

Book with editors and author named:

Talley, L. D.; Lin, M. C. In *Aspects of the Kinetics and Dynamics of Surface Reactions*; Landman, U., Ed.; AIP

Conference paper:

Conference Proceedings, American Institute of Physics: New York, 1980; pp 297-306.

Thesis:

Huang, C.-M. M. S. Thesis, Fu Jen Catholic University, June 1987.

(7) If your Papers presenting **crystallographic structure determinations**, you should include the CIF file; the author is advised to pre-deposit the CIF file with deposit@ccdc.cam.ac.uk before resubmission. Please also use the free online Checkcif service provided by the International Union of Crystallography (checkcif@iucr.org) to pre-check the CIF file and submit the Checkcif report along with your manuscript.

(8) If your native language is not English, please enlist the help of an English-speaking colleague for the revision of your text before resubmitting the manuscript.

PART II: Graphic Instructions for revision.

(Go to online submission and login)

Submission and Registration System
Journal of the Chinese Chemical Society

Each author should register a login and password before submission.
If you have not registered, you are advised to register [here](#).

JOURNAL OF THE CHINESE CHEMICAL SOCIETY

Login:
Password:

Descriptions:
1. If you want to change your password, please login first.
2. Forget password?

(Choose the correct MS. No./Title)

Back Logout

Total 1 items, each page 15 items, sorted by MS No. descendent

Serial No.	MS No.	Contributor	Type	Author(s)	Title(s)
1	970109	Jenny Tai	Full paper	Jenny Tai	Jenny Tai

(Scroll to button, press "status of your manuscript")

Corresponding Author:

Title* (The title must be as same as the title of your manuscript.):

Keywords*:

(Read the comments: If revision is necessary)

Title* (The title must be as same as the title of your manuscript.):

Keywords*:

Comment by Reviewer:

Comment by Associate Editor:

Decision by Editor-in-Chief:

Current Status: Reviewing

(Scroll to button, press "inquiry")

Title* (The title must be as same as the title of your manuscript.):

Keywords*:

Comment by Reviewer:

Comment by Associate Editor:

Decision by Editor-in-Chief:

Current Status: Reviewing

(Re-upload a cover letter and revised manuscript.)

Required Information

MS. Code:

Contributor: Jenny Tai

Submission Date*:

Field*: Organic Chemistry Inorganic Chemistry Analytical Chemistry Biochemistry Physical Chemistry Materials Science

Type*:

Author(s) Name(s)*:

Corresponding Author*:

File* (word.pdf, if.cif)